

mihi
{ face }

BeBu

NEW
DIMENSION OF
SKINCARE





**ARE YOU
HAVING
TROUBLE
CHOOSING THE
RIGHT CREAM?**



**LISTEN TO
YOUR SKIN!**

- ✓ You are constantly looking for cosmetics that are suitable for your skin
- ✓ You buy products of well-known brands, new products of the cosmetics market and you are constantly disappointed
- ✓ Bathroom shelves struggle to fit more and more tubes and bottles
- ✓ You think you've finally found your perfect match, and suddenly your skin becomes dry, grey or has imperfections
- ✓ You start to wonder if you are actually choosing the right cosmetics for your skin



**ARE YOU FAMILIAR WITH THIS
SCENARIO?**

YOU'RE NOT THE ONLY ONE!



Learn how to identify your skin's
needs and look beautiful every day!

**ARE YOU
HAVING
TROUBLE
CHOOSING THE
RIGHT CREAM?**



**LISTEN TO
YOUR SKIN!**

THE KEY TO SKINCARE IS UNDERSTANDING THE CHANGING NEEDS OF THE SKIN

Although cosmetic manufacturers have taught us the basic categorisation of skin into dry, combination, oily and mature, this is a major oversimplification. **The skin's needs change and depend on many factors.**

- ✓ The fact that your skin is usually dry doesn't mean that acne won't appear, for example during menstruation.
- ✓ Your skin may become greyish when you are overworked.
- ✓ Your skin may become drier after spending many hours in an air-conditioned car.

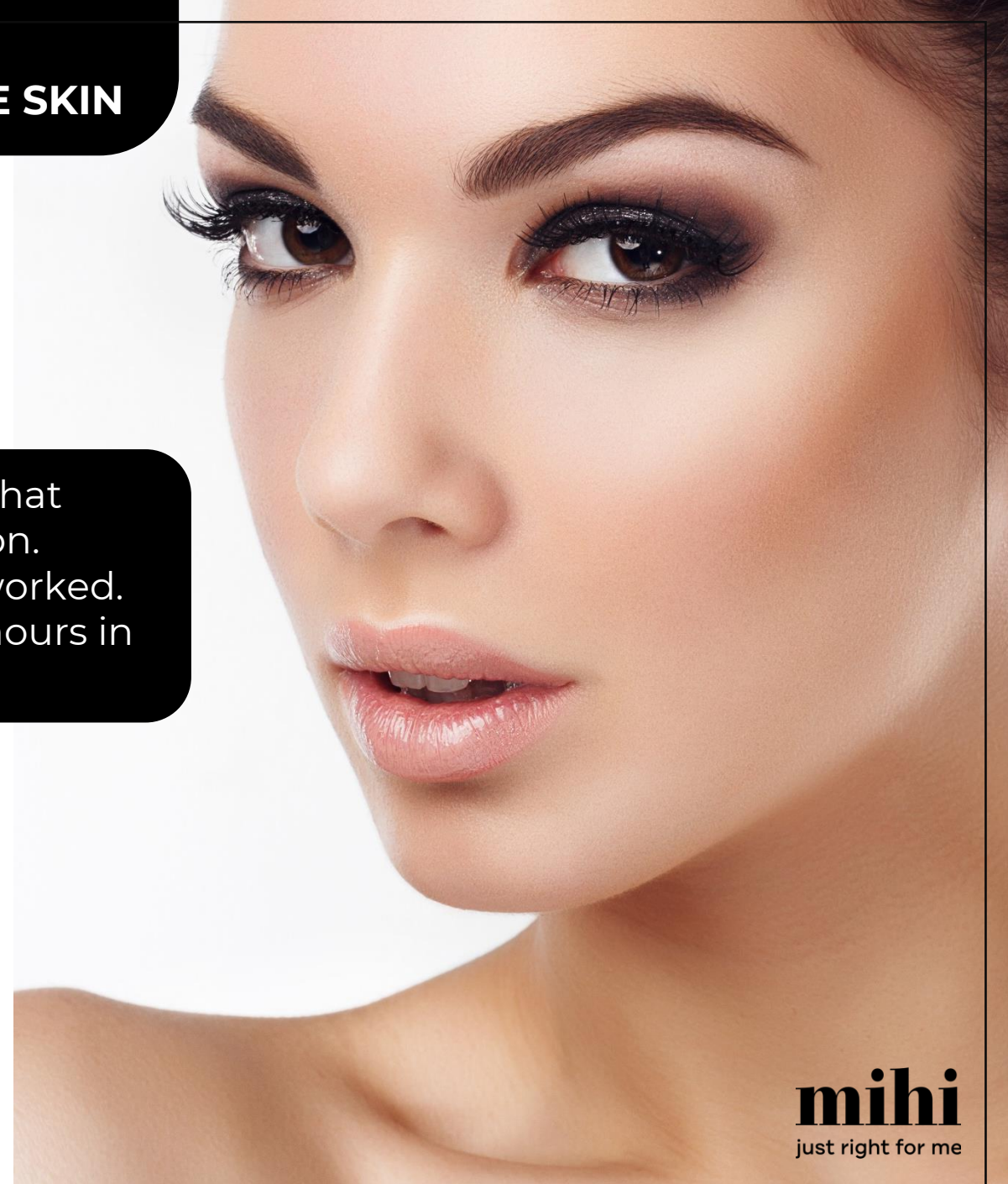


This is why you feel that creams are not fulfilling your skin's needs.



WHAT IF YOU COULD CREATE YOUR OWN SKINCARE?

And adjust it daily to the current needs of your skin?



BeBu ACTIVE DROPS - INNOVATION IN SKINCARE!



mihi
just right for me



a cosmetics line that allows you to
continuously adapt to your skin's
needs



**YOU ARE THE ONE WHO
KNOWS BEST WHAT YOU
NEED TODAY!**

mihi
just right for me

BeBu ACTIVE DROPS - INNOVATION IN SKINCARE!

CREAM BASE



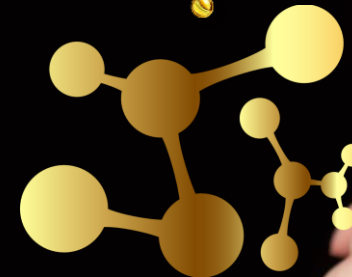
ACTIVE DROPS:

30% AHA Acids Complex
10% Niacinamide
10% Hyaluronic Complex
40% Squalane
15% Gold Vit. C +jojoba complex



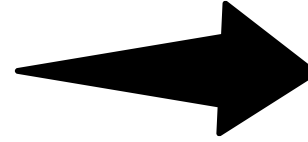
A SKINCARE
FORMULA CREATED
BY YOU

JUST FOR YOU



HOW TO USE BEBU DROPS? IN AT LEAST 4 WAYS!

BeBu drops are very easy to use.
WHY?



The type of care can be changed as desired, even several times a month.

OUR RECOMMENDATIONS FOR USE:



Choose drops for daily use that best fulfil the normal needs of your skin.



Use the drops as an additional cosmetic treatment.



In an unusual case where your skin's needs change, increase the use of drops that will be most helpful.



Most of the drops can be used as a serum.



DAILY SKIN CARE: ADD 1-2 DROPS TO THE BASE

**YOUNG,
TEENAGE SKIN**



Cream Base

+ 10% Niacinamide + 10% Hyaluronic Complex

DRY SKIN



Cream Base

+ 10% Hyaluronic Complex

Your skin will also appreciate the inclusion of 40% Squalane + 15% Gold Vit. C + Jojoba Complex in your care

SENSITIVE SKIN



Cream Base

+ 40% Squalane

Your skin will also appreciate the inclusion of 10% Hyaluronic Complex in your care





DAILY SKIN CARE: ADD 1-2 DROPS TO THE BASE

**COMBINATION, OILY
SKIN**



Cream Base

+ 10% Niacinamide

Your skin will also appreciate the hydration of the 10% Hyaluronic Complex and the exfoliation with the 30% AHA Acids Complex

**SKIN WITH THE
FIRST SIGNS OF
AGEING**



Cream Base

+ 15% Gold Vit. C + jojoba complex

Your skin will also appreciate the 10% Hyaluronic Complex and occasional exfoliation with the 30% AHA Acids Complex

MATURE SKIN



Cream Base

**+ 40% Squalane + 15% Gold Vit. C
+ jojoba complex + 10%
Hyaluronic Complex**



OCCASIONS WHERE IT IS IMPORTANT TO INCREASE THE USE OF THE DROPS OR TO INCLUDE OTHER DROPS IN THE CARE (1-2)



10% HYALURONIC COMPLEX

- ✓ During the summer you spent a lot of time in the sun and now your skin is dry.
- ✓ During winter, you exposed your skin to cold weather and dehydration. You feel that your skin has become less firm.
- ✓ You use cosmetics that dry out your skin.
- ✓ You do not drink water regularly and your skin is not sufficiently hydrated.



30% AHA ACIDS COMPLEX

- ✓ You want to gently exfoliate your skin, to speed up the regeneration process.
- ✓ You have skin discolouration (e.g. after rashes).
- ✓ You see that your skin does not seem even.
- ✓ Your skin has many imperfections (fine wrinkles, enlarged pores, etc.).



10% NIACINAMIDE

- ✓ You are about to leave the house and your skin tends to be shiny.
- ✓ The condition of your skin worsened during your period.
- ✓ You have developed imperfections on your skin as a result of a poor diet or stress.
- ✓ You used cosmetics that clogged your skin pores.



OCCASIONS WHERE IT IS IMPORTANT TO INCREASE THE USE OF THE DROPS OR TO INCLUDE OTHER DROPS IN THE CARE (1-2)



15% GOLD VIT. C + JOJOBA COMPLEX

- ✓ You've had a rough night, you have dark circles under your eyes and you don't look your best.
- ✓ You're tired, your skin hasn't looked radiant for a long time.
- ✓ You've been sick, your skin has lost its glow.



40% SKWALAN

- ✓ You spend a lot of time in an air-conditioned car or plane, which dries out your skin.
- ✓ You expose your skin to temperature changes, strong winds and other adverse factors.
- ✓ You are on holiday, have a change of climate, spend a lot of time outdoors.
- ✓ Your skin is slightly irritated, dry and you experience discomfort.



ADDITIONAL SKIN CARE FOR FACE AND BODY



INTENSIVE MOISTURISING TREATMENT

- ✓ 1 drop of 40% Squalane + 1 drop of 10% Hyaluronic Complex + Cream Base
- ✓ Duration - 21 days
- ✓ Application frequency - 2 times a day



TREATMENT TO IMPROVE ACNE SKIN CONDITION

- ✓ 1 drop of 10% Niacinamide + 1 drop of 10% Hyaluronic Complex + Cream Base
- ✓ Duration 21 days
- ✓ Application frequency - once a day in the morning.
- ✓ 1 drop of 10% Niacinamide + 1 drop of 30% AHA Acids Complex + Cream Base.
- ✓ Duration 21 days
- ✓ Application frequency - once a day in the evening





ADDITIONAL SKIN CARE FOR FACE AND BODY



TREATMENT GIVING THE SKIN A YOUTHFUL GLOW

- ✓ 1 drop of 15% Gold Vit. C +jojoba complex + 1 drop of 10% Hyaluronic Complex + Cream Base
- ✓ Duration - 21 days
- ✓ Application frequency - 2 times a day



EXFOLIATION TREATMENT

- ✓ 1 drop of 40% Squalane + Cream Base
- ✓ Duration 21 days
- ✓ Application frequency - once a day in the morning.
- ✓ 2 drops of 30% AHA Acid Complex + Cream Base
- ✓ Duration 21 days
- ✓ Application frequency - once a day in the evening.
- ✓ Avoid the sun!





YOUR NEW SERUM



BEBU ACTIVE DROPS CAN BE USED SUCCESSFULLY AS A SERUM.

Although, in our opinion, they give the best effect when combined with a cream base, there is nothing stopping you from treating them as stand-alone products.

BECAUSE WHEN IT COMES TO SKINCARE, YOU'RE IN CHARGE!

How to use Active Drops as a serum?



Choose the right drops and massage into the skin.



10% HYALURONIC COMPLEX



moisturises, strengthens, tones, smoothes



15% GOLD VITC + JOJOBA COMPLEX



moisturises, brightens, improves skin tone and elasticity



40% SQUALANE



regenerates, moisturises, nourishes, soothes skin



ATTENTION! Do not use the 30% AHA complex as a serum.
These drops should only be applied to the face together with the base.





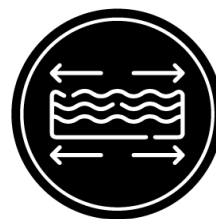
ACTIVE DROPS 30% AHA ACIDS COMPLEX



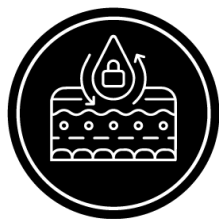
FOR WHOM:



For all skin types,
including sensitive skin.



When the skin does not look
smooth, enlarged pores and
wrinkles are visible.



Particularly
recommended for oily
and combination skin.



Can be used during pregnancy
and breastfeeding.



Can be used from teenage years onwards to prevent acne, reduce
the appearance of pores and acne.



ACTIVE DROPS
30% AHA
ACIDS COMPLEX

mihi
just right for me



ACTIVE DROPS 30% AHA ACIDS COMPLEX

CONTAINS :

AHA Phytocomplex: citric acid, lactic acid, tartaric acid, sugar maple extract, lemon peel essential oil

AHA Phytocomplex is a blend of effective AHA acids that gently exfoliate the skin and brighten the complexion, along with sugar maple extract and lemon peel oil that moisturise and smooth the skin to balance the action of the AHA acids

COSMOS* approved AHA phytocomplex

Natural AHA acids help:

- **remove exfoliated cells** and reduce the thickness of the stratum corneum.
- **reduce** fine lines and wrinkles
- **improve** skin elasticity and collagen structure
- **combat** superficial hyperpigmentation (age spots, sun spots, acne spots)
- **smooth and soften the skin**
- **cleanse pores** and reduce their size, prevent the appearance of acne
- **increase** the skin's ability to retain moisture

The *COSMOS standard is an international standard for natural and organic cosmetics that combines European certification systems into one common standard. It is the most demanding and uniform quality standard for organic and natural cosmetics in Europe and is recognised worldwide. In addition to the basic principles, COSMOS certification is concerned not only with how the product was obtained, but also with how it breaks down in the environment

APPLICATION :**AS SPECIAL PERSONALISED DAILY CARE**

- Add 1-2 drops to one portion of Cream Base BeBu, mix.
- Apply to pre-cleansed skin, along massage lines.
- Apply in the evening.

**AS AN INTENSIVE SKINCARE COURSE
(21 DAYS)**

- Increase the number of drops added to a single portion of the cream or add a complex of a few drops of Active Drops to the cream base.
- Apply in the evening and limit sun exposure/use SPF cream during the day.



ACTIVE DROPS 10% HYALURONIC COMPLEX

FOR WHOM :



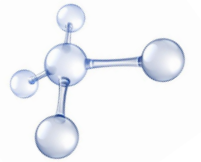
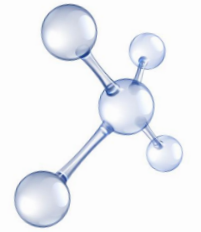
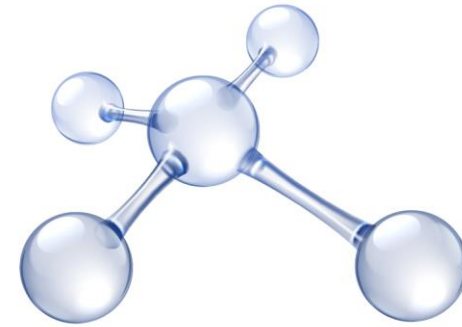
For all skin types. Particularly suitable for dry and dehydrated skin of all skin types, including sensitive skin.



In daily care, it can be used from the teenage years onwards if the skin is in need of high-quality moisturisation.



Can be used during pregnancy and breastfeeding.





ACTIVE DROPS 10% HYALURONIC COMPLEX

CONTAINS :

5 multifunctional forms of hyaluronic acid, vegetable glycerine, raspberry ketone

5 multifunctional forms of hyaluronic acid :

- ✓ **High molecular weight hyaluronic acid** forms a soft, breathable film on the skin, protecting the epidermis from moisture loss. This film also does not block pores, promotes the healing of micro-damage, soothes and softens the skin and reduces the tendency to irritation.
- ✓ **Medium molecular weight sodium** hyaluronate moisturises the deeper layers of the epidermis, smooths it and soothes irritation.
- ✓ **Hydrolysed low molecular weight hyaluronic** acid improves the condition of the skin in the deeper layers, reduces wrinkles and prevents the formation of new ones. It provides deep hydration, stimulates collagen synthesis, increases tissue density and tone, healing and repair capacity, and reduces age-related changes.
- ✓ **Sodium hyaluronate crosspolymer** - a three-dimensional form of hyaluronic acid (cross-linked hyaluronic acid) that provides long-lasting hydration. Its structure influences the slow release of the molecules, so they remain on the skin's surface for longer. In addition, it restores the skin's firmness and elasticity and reduces its roughness.
- ✓ **Hydrolysed glycosaminoglycans**, precursors of hyaluronic acid, are responsible for the structure and quality of the skin. They moisturise very quickly, have a lifting effect, brighten the skin and improve skin tone.



ACTIVE DROPS 10% HYALURONIC COMPLEX

APPLICATION :



AS SPECIAL PERSONALISED DAILY CARE

- Add 1-2 drops to one portion of Cream Base BeBu, mix.
- Apply to pre-cleansed skin, following massage lines.
- Apply in the morning and/or evening.



AS AN INTENSIVE SKINCARE COURSE (21 DAYS)

Increase the number of drops added to a single portion of the cream or add a complex of a few drops of Active Drops to the cream base.



AS STANDALONE SERUM

- Apply a few drops of product to pre-cleansed skin and spread with light massaging movements.
- Allow to be absorbed and apply cream.
- Apply in the morning and/or evening.



ACTIVE DROPS 10% NIACINAMIDE

FOR WHOM:



For oily and acne-prone skin

regulates sebum secretion, has an anti-inflammatory effect, reduces pores



For combination skin

has a multi-directional effect: reduces oily skin in the T-zone and moisturises dry areas.



For dry skin

supports the hydrolipidic barrier and moisturizes.



For mature skin

strengthens, improves elasticity, reduces discolouration and redness, eliminates dullness of the skin.



Can be used from teenage years onwards.



Can be used during pregnancy and breastfeeding.



CONTAINS :**niacinamide, vegetable glycerine****Niacinamide (vitamin B3/vitamin PP):**

- normalises sebum secretion, smoothes the skin's microrelief, helps shrink pores, serves as an anti-acne prophylaxis
- participates in strengthening the protective barrier, helps retain moisture in the epidermis
- has a rejuvenating effect: improves regeneration, stimulates the synthesis of ceramides, collagen and elastin, helping to reduce wrinkles, firm and supple the skin
- reduces discolouration, evens out skin tone, eliminates sallowness
- benefits capillaries, helps reduce the appearance of capillaries, soothes redness.



ACTIVE DROPS 10% NIACINAMIDE

APPLICATION :



AS SPECIAL PERSONALISED DAILY CARE

- Add 1-2 drops to one portion of Cream Base BeBu, mix.
- Apply to pre-cleansed skin, following massage lines.
- Apply in the morning and/or evening.



AS AN INTENSIVE SKINCARE COURSE (21 DAYS)

Increase the number of drops added to a single portion of the cream or add a complex of a few drops of Active Drops to the cream base.



AS STANDALONE SERUM

- Apply a few drops of product to pre-cleansed skin and spread with light massaging movements.
- Allow to be absorbed and apply cream.
- Apply in the morning and/or evening.

FOR WHOM :



For all skin types



Can be used during pregnancy and breastfeeding.



Particularly recommended: for very sensitive, dehydrated* (including oily), atonic and tired skin.



Suitable when the skin feels uncomfortable, dry and irritated (weather conditions, change of climate and water, prolonged stay in air-conditioned rooms/car/airplane).



Maximum effect will be seen on fading skin



Suitable for the care of skin with atopic dermatitis/eczema/ psoriasis



* It is not unusual for people with oily skin to experience dehydration after acne treatment. Using oils in this case can have negative effects, so to restore the water-lipid balance Active Drops 40% Squalane will be simply irreplaceable.

CONTAINS :**vegetable squalane (40%), rapeseed oil**

Squalane - "oil without oil", "oxygen vitamin". A colourless and odourless substance that is a natural component of human sebum, non-comedogenic.

- has a remarkable affinity with the skin, a completely compatible ingredient.
- restores the barrier function and local immunity of the skin.
- oxygenates cells and regenerates at a cellular level.
- healing effect.
- eliminates flakiness, dryness, sensitivity and dehydration of the skin.
- helps protect the skin from the negative effects of
- UVA radiation and its consequences.
- brightens, prevents the appearance of age spots.
- slows down ageing.

Canola oil - has exceptional moisturising and nourishing properties due to its fatty acids, sterols and vitamin E content.



ACTIVE DROPS 40% SQUALAN

APPLICATION :



AS SPECIAL PERSONALISED DAILY CARE

- Add 1-2 drops to one portion of Cream Base BeBu, mix.
- Apply to pre-cleansed skin, following massage lines.
- Apply in the morning and/or evening.



AS AN INTENSIVE SKINCARE COURSE (21 DAYS)

Increase the number of drops added to a single portion of the cream or add a complex of a few drops of Active Drops to the cream base.



AS STANDALONE SERUM

- Apply a few drops of product to pre-cleansed skin and spread with light massaging movements.
- Allow to be absorbed and apply cream.
- Apply in the morning and/or evening.



ACTIVE DROPS 15% GOLD VITC +JOJOBA COMPLEX

FOR WHOM :



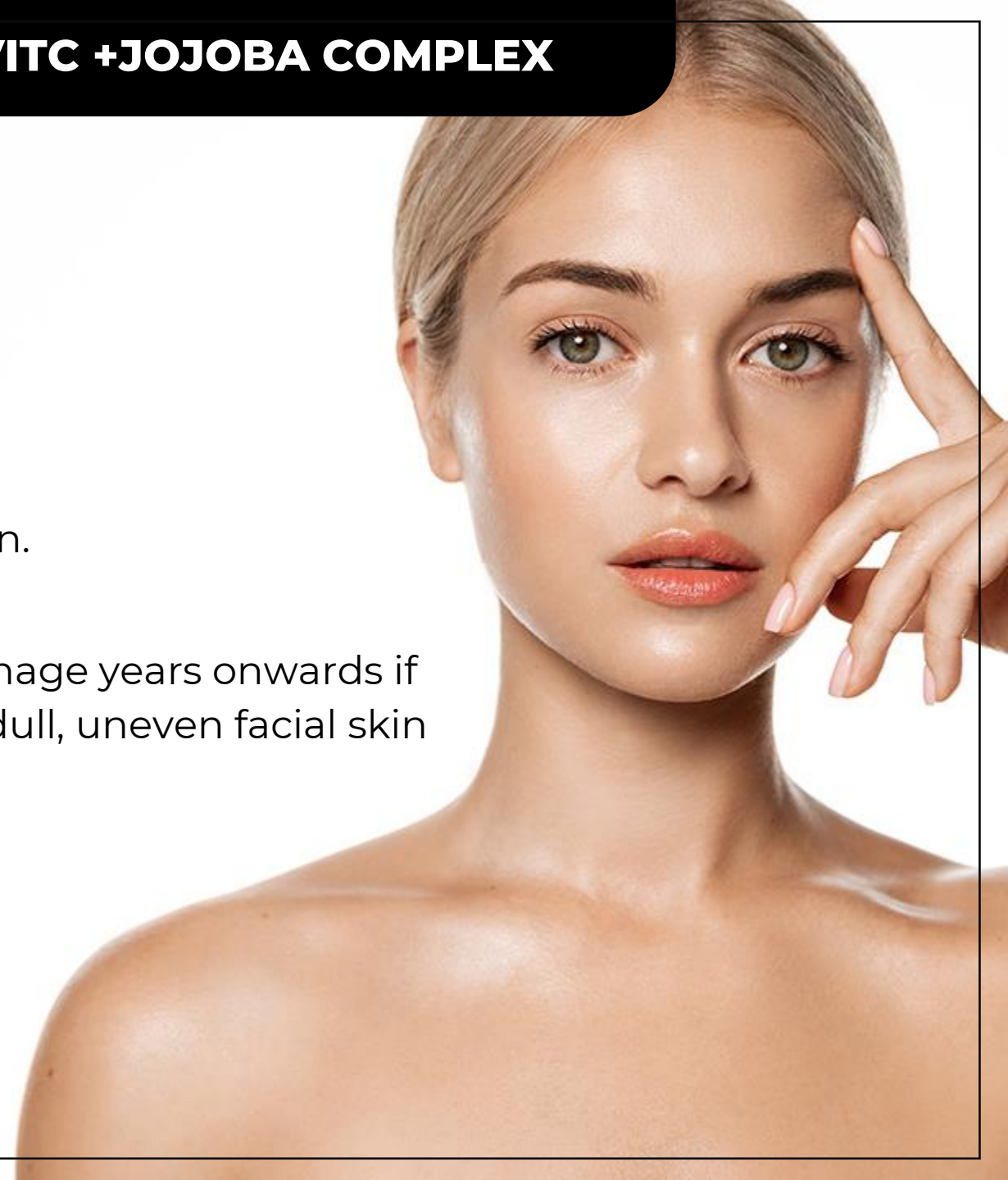
For all skin **types**,
including sensitive skin.



Can be used from teenage years onwards if
there are acne spots, dull, uneven facial skin
tone.



Can be used during
pregnancy and
breastfeeding.



JOJOBA COMPLEX
15% GOLD VIT. C
ACTIVE DROPS



ACTIVE DROPS 15% GOLD VITC +JOJOBA COMPLEX

CONTAINS :

jojoba oil, vitamin C (in the form of ascorbyl tetraisoalmitate)

Jojoba oil

- ✓ Retains moisture in the skin cells, regulates the water balance.
- ✓ Has a rejuvenating, firming and smoothing effect.
- ✓ Soothes and calms irritated skin and heals micro-damage.

Ascorbyl tetraisoalmitate is one of the most expensive and best vitamin C derivatives in terms of stability and efficacy. It is a fat-soluble form that penetrates deeper and does not irritate the skin.

- inhibits melanogenesis and destroys pigment in the upper layers of the skin, meaning:
- prevents the formation of age spots and lightens existing spots
- helps even out skin tone, lighten skin, remove acne spots
- enhances collagen synthesis, increases the skin's defensive properties
- antioxidant, protects cell membranes from aggressive free radicals
- helps reduce inflammation on the skin, increases its defence functions, evens out relief, smooths the appearance of pores.





ACTIVE DROPS 15% GOLD VITC +JOJOBA COMPLEX

APPLICATION :



AS SPECIAL PERSONALISED DAILY CARE

- Add 1-2 drops to one portion of Cream Base BeBu, mix.
- Apply to pre-cleansed skin, following massage lines.
- Apply in the morning and/or evening.



AS AN INTENSIVE SKINCARE COURSE (21 DAYS)

Increase the number of drops added to a single portion of the cream or add a complex of a few drops of Active Drops to the cream base.



AS STANDALONE SERUM

- Apply a few drops of product to pre-cleansed skin and spread with light massaging movements.
- Allow to be absorbed and apply cream.
- Apply in the morning and/or evening.



BeBu (BEAUTY BUILDER) CREAM BASE

FOR WHOM:



The cream base is suitable for all ages and skin types



Can be used during pregnancy and breastfeeding.

WHAT'S SPECIAL:

- A cream base to create a highly effective, fully personalised treatment, taking into account skin type, condition and problems.
- Using the cream base in combination with special **Active Drops** products allows for a **much faster and more pronounced effect**.
- The cream base alone **provides high-quality basic daily skin care** for the face and neck: hydration, gentle nourishment, restoration of the skin's barrier function, oxygenation and stimulation of the skin's own collagen production, protection against negative external factors.
- Can be used as a make-up base.





BeBu (BEAUTY BUILDER) CREAM BASE

CONTAINS :

vegetable glycerine, babassu oil, shea butter, pullulan, vitamin E, beta-sitosterol, squalene, vitamin C (in the stable form of ascorbyl palmitate), soybean glycine oil

Babassu oil - has a lipid formula very similar to the lipid composition of our skin. It has a protective and softening effect. It perfectly moisturises, nourishes the skin and strengthens its local immunity.

Pullulan - has an immediate lifting effect, slows down the ageing process and strengthens tissues, restoring smoothness, firmness and radiance to the skin.

Beta-sitosterol - by stimulating the production of type I collagen, helps to strengthen the skin's 'skeleton'. Smooths skin tone and micro-relief.

Squalene - 'oil without oil', the 'vitamin of oxygen'. Restores barrier function, used to protect, detoxify, moisturise, soften and nourish the skin. Regenerates at a cellular level, saturating cells with oxygen. Slows down skin ageing.

Soy glycine oil and vitamin E - activates regeneration processes, rebuilds damaged skin; prevents dehydration, dryness, irritation and peeling; rebuilds and maintains the skin barrier; minimises the effects of negative UV radiation.

APPLICATION :**AS SPECIAL PERSONALISED DAILY CARE**

- Apply to pre-cleansed skin, following massage lines.
- Apply in the morning and/or evening.

**AS AN INTENSIVE SKINCARE COURSE (21 DAYS)**

Dodać 1-2 krople wybranych kropli Active Drops do jednej porcji kremu, wymieszać. Nakładać na wstępnie oczyszczoną skórę, wzdłuż linii masażu. Stosować rano i/lub wieczorem.

**AS STANDALONE SERUM**

- Increase the number of drops added to a single portion of the cream or add a complex of a few drops of Active Drops to the cream base.



**CREATE YOUR OWN UNIQUE PRODUCT
WITH BEAUTY BUILDER**

Add and combine Active Drops, depending on your skin type, condition and problems, for a quick and maximum effect!

**A TRUE BUILDER OF PERSONALISED,
EFFECTIVE FACIAL SKIN CARE.**



mihi
{ face }

www.mihi.care